

COB Quick Selection Table

Typical Power LES mm	3-5W	5-10W	10-20W	20-30W	30-40W	40-60W	60-80W	80-100W
6	MC-13BT page4 MT-13AB page11	MF-13SA page 18 MF-13DA page 19						
8.6		MF-12SA page18						
8.9		MT-15AA page 12	MT-15AA page12 MF-15DA page19					
9.8	MC-13AA page5	MC-13AA page5	MC-13AA page 6					
12			MT-18AA page13	MF-18DB page 20				
14				MT-18AB page13 MF-18SA page 18				
14.5			MC-19AA page7	MC-19AA page 7	MC-19AA page 7			
19				MT-25AA page14	MT-25AA page 14	MF-25DA page20		
23						MC-28AA page 9	MC-28AA page 9	
21.8x21.8						MD-40J1 page17	MD-40J1 page17	MD-40J1 page17
23x23							MD-40J3 page 17	
32.8						MC-38AA page10		MC-38AA page 10

上表额定功率仅供参考。根据客户应用的散热条件，实际应用功率可为额定功率的 1.5 倍至 2 倍，请参考规格书上的要求。

Above table is for reference only. Customers may apply 1.5 times to 2 times of the typical power for COB application. Please check the related COB data sheets.

易美可提供三种数据方案供客户选择：

- 1、常规生产数据的生产追溯；
- 2、特殊参数的测试需求（例如 R1-R15；Duv）；
- 3、每颗材料一对一的生产数据追溯。

易美可提供根据客户要求协作开发的订制方案。

Shineon offers three data solutions for customers to choose from:

- 1、Production traceability for routine production data；
- 2、Test requirements for special parameters(eg. R1-R15；Duv)；
- 3、One-to-one production data traceability for each material；

Shineon can provide customized solutions based on customer requirements.



技术 品质 服务

目录 Content

镜面铝系列 Aluminum Substrate Series

• 易美的主力机种		
Major COB line of Shineon	MC-13BT	4
• 高光效应用	MC-13AA	5
High lumen efficacy application	MC-19AA	7
• 高导热应用	MC-28AA	9
High thermal conductivity	MC-38AA	10
• LM-80 认证		
LM-80 certified		
• 家居照明, 商用照明, 工矿照明		
Household, commercial and industrial lighting application		

陶瓷基系列 Ceramic Substrate Series

• 易美的主力机种		
Major COB line of Shineon	MT-13AB	11
• 耐高压应用	MT-15AA	12
High voltage endurance	MT-18AA	13
• 无硫化风险	MT-18AB	13
Sulfuration risk free	MT-25AA	14
• LM-80 认证		
LM-80 certified		
• 家居照明, 商用照明, 工矿照明		
Household, commercial and industrial lighting application		

特殊色点系列 Special Color Series

• BBBL 色点, 用于商用和酒店照明		
BBBL color points for retail and hotel lighting application	MD-40J1	15
• 超市照明 (水果, 蔬菜, 肉类)	MD-40J3	16
Supermarket lighting (Fruit, vegetable, meat ,etc)		

倒装大功率系列 High Power Flip-Chip Series

• 可靠性倒装技术		
Using reliable flip-chip packaging technology	MD-40J1	17
	MD-40J3	

可调色温系列 CCT Tunable Series

• CSP+ 倒装 COB 技术	Warn Dimming MF-12SA、	
CSP& Flip-chip COB technology	MF-13SA、 MF-18SA	18
• 色温可调	CCT tunable Series -	
CCT tunable	MF-13DA、 MF-15DA、	19
	MF-18DB、 MF-25DA	20

全光谱系列 Kaleidolite™ Series

• 光谱与自然光接近	MC-13AA	21
Emulating natural light source	MC-19AA	
• 高光效、超高显指、色彩更真实		
High lumen efficacy, Super High CRI, Truer color		



技术 品质 服务

易美集团成立于 2010 年，由金沙江、北极光、IDG、MayField 等国际风投联合投资，多位国家级人才、留美博士创办。

易美集团聚焦光电、第三代半导体、新型显示等领域的国际先进硬科技技术，致力于新产品及高精尖产品的研发及制造。创建以来，易美得到了国际国内一流客户的认可与信任，并获得了红鲱鱼（Red Herring）全球 100 强，德勤（Deloitte）中国高科技高成长 50 强，国务院侨办重点华侨华人创业团队等荣誉。公司承接并主导了 17 项国家及北京重大科技项目，包括多项科技部国家重点研发计划，“战略性先进电子材料”重点专项课题等。

历经多年的飞速发展，为满足高品质光电器件及模组日益增长的市场需求，2017 年 10 月在南昌成立了“南昌易美光电科技有限公司”。公司利用北京的研发及国际化优势，结合南昌的地域及产业优势，加快扩大易美高品质光电封装器件与模组组件的生产规模，以满足国内外客户对高品质产品的需求。

易美集团坚持自主创新，在国际及国内创造了多个第一。被授予北京经济技术开发区博士后科研工作站；高亮度半导体发光器件北京国际科技合作基地；中关村国家自主创新示范区；北京科技研究开发机构；北京市设计创新中心等称号。公司已获得 150 多项国际、国内专利，积极参与国家标准编制，推动企业和行业的标准化发展，建立了由中国 CNAS 及美国 EPA 认证的 LM-80 实验室，先进的自动化产线采用 ISO9001 质量管理体系及专业的 ERP/MES 系统。公司始终坚信先进的技术、优质的服务、可靠的质量是生存之本与核心价值。公司的愿景是用创新改变世界，使世界更光明。公司的使命是成为顾客心目中 LED 技术方面的领导者、聚焦客户关注的挑战和压力，提供有竞争力的 LED 解决方案和服务、我们积极致力于器件、模组及制造技术方面的知识提升。

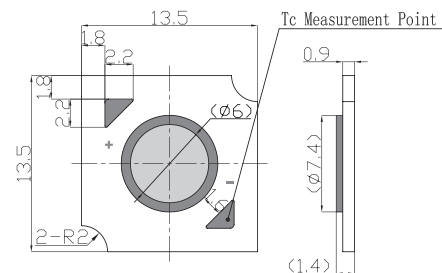
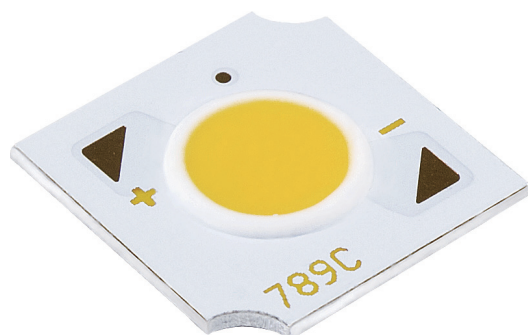
技术 品质 服务



Aluminum Substrate MC-13BT Series

(Major COB line)

技术：技术创新是我们取得优势的条件



Feature

- MR11,MR16,GU10 spot light, candle light
- 6mm LES
- Standard CRI 80 with optional CRI 90 and CRI 95
- Standard 3-step with optional 2-step binning
- Voltage selection: 9v and 36v
- LM-80 certified

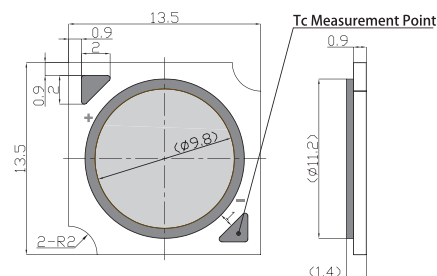
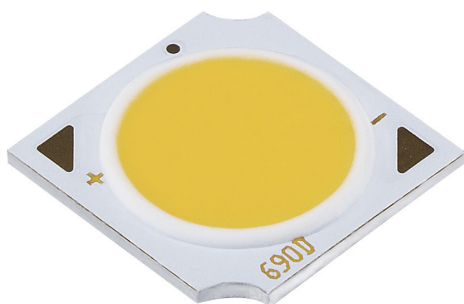
MC-13BT

型号 Part Number	显色性 Typ.Ra	色温 [K] CCT	光通量 [lm] @Typ.If	光效 [lm/w] @Typ.If	电流 [mA] Typ.If	电压 [V] Typ.Vf	功率 [W] Power	最大电流 [mA] Max.If	最大功率 [W] Max.Power
MC-13BT-270-H-0305-C		2700	288	152	225	8.4	1.9	600	5.1
			374	147	300	8.5	2.6		
MC-13BT-300-H-0305-C		3000	303	161	225	8.4	1.9		
			394	155	300	8.5	2.6		
MC-13BT-400-H-0305-C	82	4000	312	165	225	8.4	1.9		
			406	159	300	8.5	2.6		
MC-13BT-500-H-0305-C		5000	322	170	225	8.4	1.9		
			418	164	300	8.5	2.6		
MC-13BT-570-H-0305-C		5700	323	171	225	8.4	1.9		
			420	165	300	8.5	2.6		
MC-13BT-270-H-1202-C		2700	423	140	90	33.5	3.0	240	8.2
			549	135	120	34.0	4.1		
MC-13BT-300-H-1202-C		3000	445	148	90	33.5	3.0		
			578	142	120	34.0	4.1		
MC-13BT-400-H-1202-C	82	4000	458	152	90	33.5	3.0		
			595	146	120	34.0	4.1		
MC-13BT-500-H-1202-C		5000	472	156	90	33.5	3.0		
			613	150	120	34.0	4.1		
MC-13BT-570-H-1202-C		5700	474	157	90	33.5	3.0		
			616	151	120	34.0	4.1		

Aluminum Substrate MC-13AA Series

(Major COB line)

品质：不接受不良品、不制造不良品、不流出不良品



Feature

- MR11, MR16, GU10 spot light
- 9.8mm LES
- Offer CRI 80 and CRI 90
- Standard 3-step with optional 2-step binning
- Voltage selection: 36v
- LM-80 certified

MC-13AA

型号 Part Number	显色性 Typ.Ra	色温 [K] CCT	光通量 [lm] @Typ.If	光效 [lm/w] @Typ.If	电流 [mA] Typ.If	电压 [V] Typ.Vf	功率 [W] Power	最大电流 [mA] Max.If	最大功率 [W] Max.Power
MC-13AA-270-H-1202-C	82	2700	475	157	90	33.5	3.0	240	8.2
			617	151	120	34.0	4.1		
MC-13AA-300-H-1202-C		3000	500	166	90	33.5	3.0		
			649	159	120	34.0	4.1		
MC-13AA-400-H-1202-C		4000	515	171	90	33.5	3.0		
			668	164	120	34.0	4.1		
MC-13AA-500-H-1202-C	91	5000	530	176	90	33.5	3.0		
			688	169	120	34.0	4.1		
MC-13AA-570-H-1202-C		5700	532	177	90	33.5	3.0		
			691	169	120	34.0	4.1		
MC-13AA-270-S-1202-C		2700	404	134	90	33.5	3.0		
			524	128	120	34.0	4.1		
MC-13AA-300-S-1202-C	82	3000	425	141	90	33.5	3.0	360	12.2
			552	135	120	34.0	4.1		
MC-13AA-400-S-1202-C		4000	438	145	90	33.5	3.0		
			568	139	120	34.0	4.1		
MC-13AA-500-S-1202-C		5000	450	149	90	33.5	3.0		
			585	143	120	34.0	4.1		
MC-13AA-270-H-1203-C	91	2700	699	154	135	33.5	4.5		
			907	148	180	34.0	6.1		
MC-13AA-300-H-1203-C		3000	735	163	135	33.5	4.5		
			955	156	180	34.0	6.1		
MC-13AA-400-H-1203-C		4000	757	167	135	33.5	4.5		
			984	161	180	34.0	6.1		
MC-13AA-500-H-1203-C	82	5000	779	172	135	33.5	4.5		
			1012	165	180	34.0	6.1		
MC-13AA-570-H-1203-C		5700	783	173	135	33.5	4.5		
			1017	166	180	34.0	6.1		
MC-13AA-270-S-1203-C		2700	594	131	135	33.5	4.5		
			771	126	180	34.0	6.1		
MC-13AA-300-S-1203-C	91	3000	625	138	135	33.5	4.5		
			812	133	180	34.0	6.1		
MC-13AA-400-S-1203-C		4000	644	142	135	33.5	4.5		
			836	137	180	34.0	6.1		
MC-13AA-500-S-1203-C		5000	663	147	135	33.5	4.5		
			860	141	180	34.0	6.1		

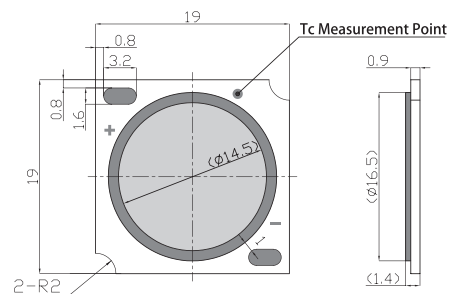
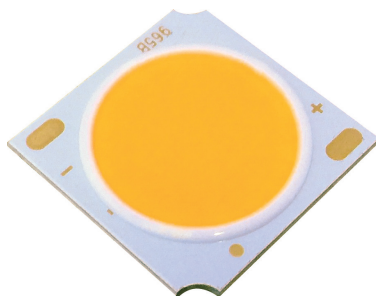
MC-13AA

型号 Part Number	显色性 Typ.Ra	色温 [K] CCT	光通量 [lm] @Typ.If	光效 [lm/w] @Typ.If	电流 [mA] Typ.If	电压 [V] Typ.Vf	功率 [W] Power	最大电流 [mA] Max.If	最大功率 [W] Max.Power
MC-13AA-270-H-1204-C	82	2700	915	152	180	33.5	6.0	480	16.3
			1188	146	240	34.0	8.2		
MC-13AA-300-H-1204-C		3000	963	160	180	33.5	6.2		
			1251	153	240	34.0	8.4		
MC-13AA-400-H-1204-C		4000	992	165	180	33.5	6.0		
			1289	158	240	34.0	8.2		
MC-13AA-500-H-1204-C		5000	1021	169	180	33.5	6.0		
			1326	163	240	34.0	8.2		
MC-13AA-570-H-1204-C		5700	1026	170	180	33.5	6.0		
			1332	163	240	34.0	8.2		
MC-13AA-270-S-1204-C	91	2700	778	129	180	33.5	6.0		
			1010	124	240	34.0	8.2		
MC-13AA-300-S-1204-C		3000	819	136	180	33.5	6.0		
			1063	130	240	34.0	8.2		
MC-13AA-400-S-1204-C		4000	843	140	180	33.5	6.0		
			1095	134	240	34.0	8.2		
MC-13AA-500-S-1204-C		5000	868	144	180	33.5	6.0		
			1127	138	240	34.0	8.2		
MC-13AA-270-H-1203-B	82	2700	1466	157	270	34.5	9.3	690	24.2
			1879	149	360	35.0	12.6		
MC-13AA-300-H-1203-B		3000	1543	166	270	34.5	9.3		
			1978	157	360	35.0	12.6		
MC-13AA-400-H-1203-B		4000	1589	171	270	34.5	9.3		
			2037	162	360	35.0	12.6		
MC-13AA-500-H-1203-B		5000	1635	176	270	34.5	9.3		
			2097	166	360	35.0	12.6		
MC-13AA-570-H-1203-B		5700	1643	176	270	34.5	9.3		
			2107	167	360	35.0	12.6		
MC-13AA-270-S-1203-B	91	2700	1246	134	270	34.5	9.3		
			1597	127	360	35.0	12.6		
MC-13AA-300-S-1203-B		3000	1311	141	270	34.5	9.3		
			1681	133	360	35.0	12.6		
MC-13AA-400-S-1203-B		4000	1351	145	270	34.5	9.3		
			1732	137	360	35.0	12.6		
MC-13AA-500-S-1203-B		5000	1390	149	270	34.5	9.3		
			1782	141	360	35.0	12.6		
MC-13AA-270-H-1204-B	82	2700	1804	145	360	34.5	12.4	920	32.2
			2313	138	480	35.0	16.8		
MC-13AA-300-H-1204-B		3000	1899	153	360	34.5	12.4		
			2435	145	480	35.0	16.8		
MC-13AA-400-H-1204-B		4000	1956	158	360	34.5	12.4		
			2508	149	480	35.0	16.8		
MC-13AA-500-H-1204-B		5000	2013	162	360	34.5	12.4		
			2581	154	480	35.0	16.8		
MC-13AA-570-H-1204-B		5700	2023	163	360	34.5	12.4		
			2593	154	480	35.0	16.8		
MC-13AA-270-S-1204-B	91	2700	1534	123	360	34.5	12.4		
			1966	117	480	35.0	16.8		
MC-13AA-300-S-1204-B		3000	1614	130	360	34.5	12.4		
			2070	123	480	35.0	16.8		
MC-13AA-400-S-1204-B		4000	1663	134	360	34.5	12.4		
			2132	127	480	35.0	16.8		
MC-13AA-500-S-1204-B		5000	1711	138	360	34.5	12.4		
			2194	131	480	35.0	16.8		

Aluminum Substrate MC-19AA Series

(Major COB line)

服务：聚焦客户关注的挑战和压力，提供有竞争力的 LED 解决方案和服务



Feature

- Track light, PAR light 20/30/38
- 14.5mm LES
- Offer CRI 80 and CRI 90
- Standard 3-step with optional 2-step binning
- Voltage selection: 36v
- LM-80 certified

MC-19AA

型号 Part Number	显色性 Typ.Ra	色温 [K] CCT	光通量 [lm] @Typ.If	光效 [lm/w] @Typ.If	电流 [mA] Typ.If	电压 [V] Typ.Vf	功率 [W] Power	最大电流 [mA] Max.If	最大功率 [W] Max.Power
MC-19AA-270-H-1206-C	82	2700	1453	161	270	33.5	9.0	720	24.5
			1888	154	360	34.0	12.2		
MC-19AA-300-H-1206-C		3000	1530	169	270	33.5	9.0		
			1987	162	360	34.0	12.2		
MC-19AA-400-H-1206-C		4000	1576	174	270	33.5	9.0		
			2047	167	360	34.0	12.2		
MC-19AA-500-H-1206-C	91	5000	1622	179	270	33.5	9.0	960	32.6
			2106	172	360	34.0	12.2		
MC-19AA-570-H-1206-C		5700	1629	180	270	33.5	9.0		
			2116	173	360	34.0	12.2		
MC-19AA-270-S-1206-C		2700	1235	137	270	33.5	9.0		
			1605	131	360	34.0	12.2		
MC-19AA-300-S-1206-C	82	3000	1300	144	270	33.5	9.0	960	32.6
			1689	138	360	34.0	12.2		
MC-19AA-400-S-1206-C		4000	1340	148	270	33.5	9.0		
			1740	142	360	34.0	12.2		
MC-19AA-500-S-1206-C		5000	1379	152	270	33.5	9.0		
			1790	146	360	34.0	12.2		
MC-19AA-270-H-1208-C	91	2700	1899	157	360	33.5	12.1	960	32.6
			2466	151	480	34.0	16.3		
MC-19AA-300-H-1208-C		3000	1999	166	360	33.5	12.1		
			2596	159	480	34.0	16.3		
MC-19AA-400-H-1208-C		4000	2059	171	360	33.5	12.1		
			2674	164	480	34.0	16.3		
MC-19AA-500-H-1208-C	82	5000	2119	176	360	33.5	12.1	960	32.6
			2752	169	480	34.0	16.3		
MC-19AA-570-H-1208-C		5700	2129	177	360	33.5	12.1		
			2765	169	480	34.0	16.3		
MC-19AA-270-S-1208-C		2700	1614	134	360	33.5	12.1		
			2096	128	480	34.0	16.3		
MC-19AA-300-S-1208-C	91	3000	1699	141	360	33.5	12.1	960	32.6
			2207	135	480	34.0	16.3		
MC-19AA-400-S-1208-C		4000	1750	145	360	33.5	12.1		
			2273	139	480	34.0	16.3		
MC-19AA-500-S-1208-C		5000	1801	149	360	33.5	12.1		
			2339	143	480	34.0	16.3		

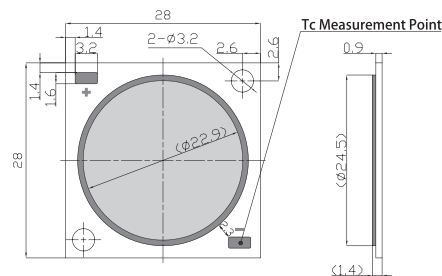
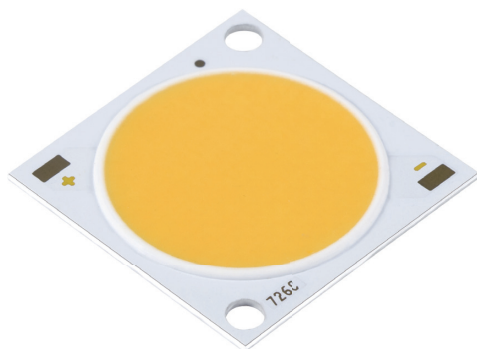
MC-19AA

型号 Part Number	显色性 Typ.Ra	色温 [K] CCT	光通量 [lm] @Typ.If	光效 [lm/w] @Typ.If	电流 [mA] Typ.If	电压 [V] Typ.Vf	功率 [W] Power	最大电流 [mA] Max.If	最大功率 [W] Max.Power
MC-19AA-270-H-1212-C	82	2700	2755	152	540	33.5	18.1	1440	49.0
			3578	146	720	34.0	24.5		
MC-19AA-300-H-1212-C		3000	2900	160	540	33.5	18.1		
			3766	154	720	34.0	24.5		
MC-19AA-400-H-1212-C		4000	2987	165	540	33.5	18.1		
			3879	158	720	34.0	24.5		
MC-19AA-500-H-1212-C		5000	3074	170	540	33.5	18.1		
			3992	163	720	34.0	24.5		
MC-19AA-570-H-1212-C		5700	3088	171	540	33.5	18.1		
			4011	164	720	34.0	24.5		
MC-19AA-270-S-1212-C	91	2700	2342	129	540	33.5	18.1		
			3041	124	720	34.0	24.5		
MC-19AA-300-S-1212-C		3000	2465	136	540	33.5	18.1		
			3201	131	720	34.0	24.5		
MC-19AA-400-S-1212-C		4000	2539	140	540	33.5	18.1		
			3297	135	720	34.0	24.5		
MC-19AA-500-S-1212-C		5000	2613	144	540	33.5	18.1		
			3393	139	720	34.0	24.5		
MC-19AA-270-H-1208-B		2700	3884	156	720	34.5	24.8	1840	64.4
			4979	148	960	35.0	33.6		
MC-19AA-300-H-1208-B		3000	4088	165	720	34.5	24.8		
			5241	156	960	35.0	33.6		
MC-19AA-400-H-1208-B		4000	4211	170	720	34.5	24.8		
			5398	161	960	35.0	33.6		
MC-19AA-500-H-1208-B		5000	4333	174	720	34.5	24.8		
			5555	165	960	35.0	33.6		
MC-19AA-570-H-1208-B		5700	4354	175	720	34.5	24.8		
			5582	166	960	35.0	33.6		
MC-19AA-270-S-1208-B	91	2700	3301	133	720	34.5	24.8		
			4232	126	960	35.0	33.6		
MC-19AA-300-S-1208-B		3000	3475	140	720	34.5	24.8		
			4455	133	960	35.0	33.6		
MC-19AA-400-S-1208-B		4000	3579	144	720	34.5	24.8		
			4588	137	960	35.0	33.6		
MC-19AA-500-S-1208-B		5000	3683	148	720	34.5	24.8		
			4722	141	960	35.0	33.6		
MC-19AA-270-H-1210-B		2700	4752	153	900	34.5	31.1	2300	80.5
			6092	145	1200	35.0	42.0		
MC-19AA-300-H-1210-B		3000	5002	161	900	34.5	31.1		
			6413	153	1200	35.0	42.0		
MC-19AA-400-H-1210-B		4000	5152	166	900	34.5	31.1		
			6605	157	1200	35.0	42.0		
MC-19AA-500-H-1210-B		5000	5302	171	900	34.5	31.1		
			6798	162	1200	35.0	42.0		
MC-19AA-570-H-1210-B		5700	5327	172	900	34.5	31.1		
			6830	163	1200	35.0	42.0		
MC-19AA-270-S-1210-B	91	2700	4039	130	900	34.5	31.1		
			5178	123	1200	35.0	42.0		
MC-19AA-300-S-1210-B		3000	4252	137	900	34.5	31.1		
			5451	130	1200	35.0	42.0		
MC-19AA-400-S-1210-B		4000	4379	141	900	34.5	31.1		
			5615	134	1200	35.0	42.0		
MC-19AA-500-S-1210-B		5000	4507	145	900	34.5	31.1		
			5778	138	1200	35.0	42.0		

Aluminum Substrate MC-28AA Series

(Major COB line)

技术：技术创新是我们取得优势的条件



Feature

- Down light, high bay
- 23mm LES
- Offer CRI 80 and CRI 90
- Standard 3-step with optional 2-step binning
- Voltage selection: 36v and 54v
- LM-80 certified

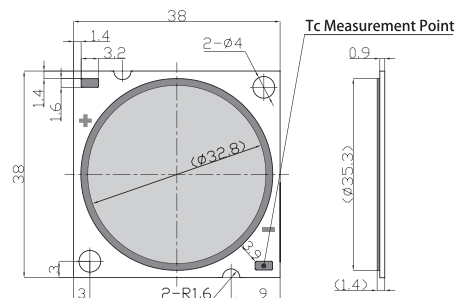
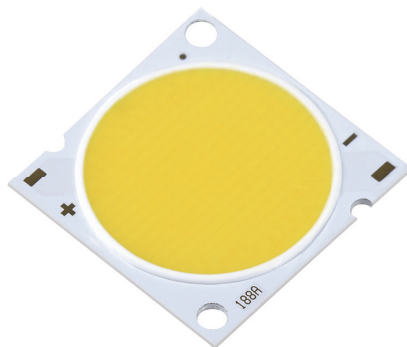
MC-28AA

型号 Part Number	显色性 Typ.Ra	色温 [K] CCT	光通量 [lm] @Typ.If	光效 [lm/w] @Typ.If	电流 [mA] Typ.If	电压 [V] Typ.Vf	功率 [W] Power	最大电流 [mA] Max.If	最大功率 [W] Max.Power
MC-28AA-270-H-1212-B	82	2700	5424	143	1080	35.0	37.8	2760	98.0
			6954	136	1440	35.5	51.1		
MC-28AA-300-H-1212-B		3000	5710	151	1080	35.0	37.8		
			7320	143	1440	35.5	51.1		
MC-28AA-400-H-1212-B		4000	5881	156	1080	35.0	37.8		
			7540	147	1440	35.5	51.1		
MC-28AA-500-H-1212-B	91	5000	6052	160	1080	35.0	37.8	2760	98.0
			7759	152	1440	35.5	51.1		
MC-28AA-570-H-1212-B		5700	6081	161	1080	35.0	37.8		
			7796	153	1440	35.5	51.1		
MC-28AA-270-S-1212-B		2700	4611	122	1080	35.0	37.8		
			5911	116	1440	35.5	51.1		
MC-28AA-300-S-1212-B	82	3000	4853	128	1080	35.0	37.8	2760	146.8
			6222	122	1440	35.5	51.1		
MC-28AA-400-S-1212-B		4000	4999	132	1080	35.0	37.8		
			6409	125	1440	35.5	51.1		
MC-28AA-500-S-1212-B		5000	5144	136	1080	35.0	37.8		
			6595	129	1440	35.5	51.1		
MC-28AA-270-H-1812-B	91	2700	7775	137	1080	52.5	56.7	2760	146.8
			9967	130	1440	53.2	76.6		
MC-28AA-300-H-1812-B		3000	8184	144	1080	52.5	56.7		
			10492	137	1440	53.2	76.6		
MC-28AA-400-H-1812-B		4000	8429	149	1080	52.5	56.7		
			10807	141	1440	53.2	76.6		
MC-28AA-500-H-1812-B	82	5000	8675	153	1080	52.5	56.7	2760	146.8
			11122	145	1440	53.2	76.6		
MC-28AA-570-H-1812-B		5700	8716	154	1080	52.5	56.7		
			11174	146	1440	53.2	76.6		
MC-28AA-270-S-1812-B		2700	6608	117	1080	52.5	56.7		
			8472	111	1440	53.2	76.6		
MC-28AA-300-S-1812-B	91	3000	6956	123	1080	52.5	56.7	2760	146.8
			8918	116	1440	53.2	76.6		
MC-28AA-400-S-1812-B		4000	7165	126	1080	52.5	56.7		
			9186	120	1440	53.2	76.6		
MC-28AA-500-S-1812-B		5000	7374	130	1080	52.5	56.7		
			9453	123	1440	53.2	76.6		

Aluminum Substrate MC-38AA Series

(Major COB line)

品质：不接受不良品、不制造不良品、不流出不良品



Feature

- Down light, high bay
- 32.8mm LES
- Offer CRI 70 and CRI 80
- Standard 3-step with optional 2-step binning
- Voltage selection: 51v
- LM-80 certified

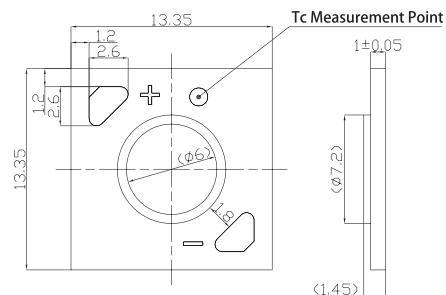
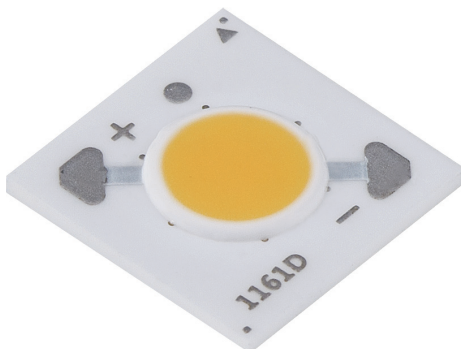
MC-38AA

型号 Part Number	显色性 Typ.Ra	色温 [K] CCT	光通量 [lm] @Typ.If	光效 [lm/w] @Typ.If	电流 [mA] Typ.If	电压 [V] Typ.Vf	功率 [W] Power	最大电流 [mA] Max.If	最大功率 [W] Max.Power
MC-38AA-270-H-1708-B	82	2700	6853	140	960	51.0	49.0	1440	73.4
MC-38AA-300-H-1708-B		3000	7214	147					
MC-38AA-400-H-1708-B		4000	7430	152					
MC-38AA-500-H-1708-B		5000	7647	156					
MC-38AA-570-H-1708-B		5700	7683	157					
MC-38AA-570-N-1708-B	72	5700	8000	163	1920	51.0	97.9	2880	146.9
MC-38AA-270-H-1716-B	82	2700	12659	129					
MC-38AA-300-H-1716-B		3000	13325	136					
MC-38AA-400-H-1716-B		4000	13725	140					
MC-38AA-500-H-1716-B		5000	14125	144					
MC-38AA-570-H-1716-B		5700	14191	145					
MC-38AA-570-N-1716-B	72	5700	15000	153					

Ceramic Substrate MT-13AB Series

(Major COB line)

服务：聚焦客户关注的挑战和压力，提供有竞争力的 LED 解决方案和服务



11

Feature

- MR11,MR16, GU10 spot light, candle light
- 6mm LES
- Offer CRI 80 and CRI 90
- Standard 3-step with optional 2-step binning
- Voltage selection: 9v and 36v
- LM-80 certified

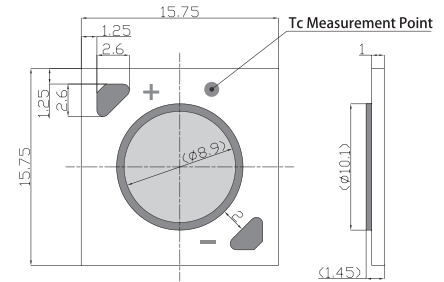
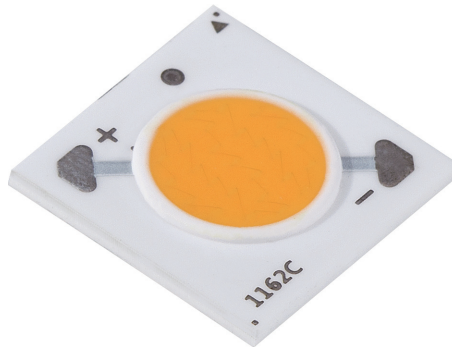
MT-13AB

型号 Part Number	显色性 Typ.Ra	色温 [K] CCT	光通量 [lm] @Typ.If	光效 [lm/w] @Typ.If	电流 [mA] Typ.If	电压 [V] Typ.Vf	功率 [W] Power	最大电流 [mA] Max.If	最大功率 [W] Max.Power
MT-13AB-270-H-0305-B2	82	2700	447	124	400	9.0	3.6	1000	9.0
MT-13AB-300-H-0305-B2		3000	456	127					
MT-13AB-400-H-0305-B2		4000	470	130					
MT-13AB-500-H-0305-B2		5000	483	134					
MT-13AB-570-H-0305-B2		5700	486	135					
MT-13AB-270-S-0305-B2	91	2700	380	106					
MT-13AB-300-S-0305-B2		3000	388	108					
MT-13AB-400-S-0305-B2		4000	399	111					
MT-13AB-500-S-0305-B2		5000	411	114					
MT-13AB-270-H-1202-C4	82	2700	433	127	100	34.0	3.4	250	8.5
MT-13AB-300-H-1202-C4		3000	456	134					
MT-13AB-400-H-1202-C4		4000	470	138					
MT-13AB-500-H-1202-C4		5000	483	142					
MT-13AB-570-H-1202-C4		5700	486	143					
MT-13AB-270-S-1202-C4	91	2700	368	108					
MT-13AB-300-S-1202-C4		3000	388	114					
MT-13AB-400-S-1202-C4		4000	399	117					
MT-13AB-500-S-1202-C4		5000	411	121					

Ceramic Substrate MT-15AA Series

(Major COB line)

技术：技术创新是我们取得优势的条件



Feature

- MR11,MR16, GU10 spot light
- 8.9mm LES
- Offer CRI 80 and CRI 90
- Standard 3-step with optional 2-step binning
- Voltage selection: 36v
- LM-80 certified

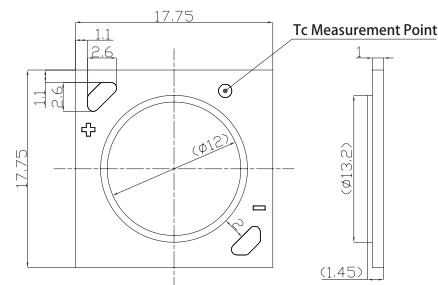
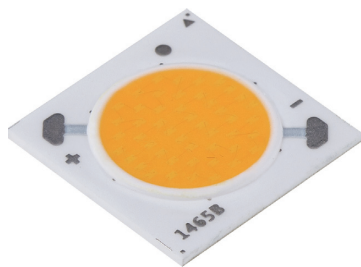
MT-15AA

型号 Part Number	显色性 Typ.Ra	色温 [K] CCT	光通量 [lm] @Typ.If	光效 [lm/w] @Typ.If	电流 [mA] Typ.If	电压 [V] Typ.Vf	功率 [W] Power	最大电流 [mA] Max.If	最大功率 [W] Max.Power
MT-15AA-270-H-1203-C4	82	2700	903	127	200	35.5	7.1	375	13.3
MT-15AA-300-H-1203-C4		3000	950	134					
MT-15AA-400-H-1203-C4		4000	979	138					
MT-15AA-500-H-1203-C4		5000	1007	142					
MT-15AA-570-H-1203-C4		5700	1012	143					
MT-15AA-270-S-1203-C4	91	2700	767	108					
MT-15AA-300-S-1203-C4		3000	808	114					
MT-15AA-400-S-1203-C4		4000	832	117					
MT-15AA-500-S-1203-C4		5000	856	121					
MT-15AA-270-H-1202-B2	82	2700	1109	123	250	36.0	9.0	450	16.2
MT-15AA-300-H-1202-B2		3000	1167	130					
MT-15AA-400-H-1202-B2		4000	1202	134					
MT-15AA-500-H-1202-B2		5000	1237	137					
MT-15AA-570-H-1202-B2		5700	1243	138					
MT-15AA-270-S-1202-B2	91	2700	942	105					
MT-15AA-300-S-1202-B2		3000	992	110					
MT-15AA-400-S-1202-B2		4000	1022	114					
MT-15AA-500-S-1202-B2		5000	1051	117					
MT-15AA-270-H-1203-B2	82	2700	1511	120	350	36.0	12.6	600	21.6
MT-15AA-300-H-1203-B2		3000	1591	126					
MT-15AA-400-H-1203-B2		4000	1639	130					
MT-15AA-500-H-1203-B2		5000	1686	134					
MT-15AA-570-H-1203-B2		5700	1694	134					
MT-15AA-270-S-1203-B2	91	2700	1285	102					
MT-15AA-300-S-1203-B2		3000	1352	107					
MT-15AA-400-S-1203-B2		4000	1393	111					
MT-15AA-500-S-1203-B2		5000	1433	114					

Ceramic Substrate MT-18AA Series

(Major COB line)

品质：不接受不良品、不制造不良品、不流出不良品



Feature

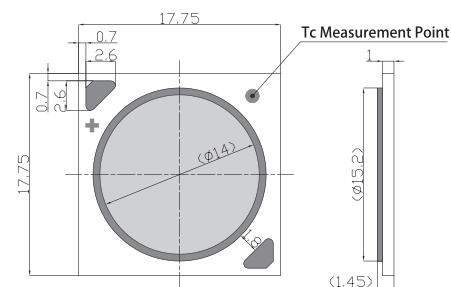
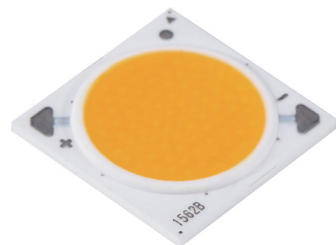
- Track light, PAR light 20/30/38
- 12mm LES
- Offer CRI 80 and CRI 90
- Standard 3-step with optional 2-step binning
- Voltage selection: 36v
- LM-80 certified

MT-18AA

型号 Part Number	显色性 Typ.Ra	色温 [K] CCT	光通量 [lm] @Typ.If	光效 [lm/w] @Typ.If	电流 [mA] Typ.If	电压 [V] Typ.Vf	功率 [W] Power	最大电流 [mA] Max.If	最大功率 [W] Max.Power
MT-18AA-270-H-1204-B2	82	2700	2046	126	450	36.0	16.2	900	32.4
MT-18AA-300-H-1204-B2		3000	2154	133					
MT-18AA-400-H-1204-B2		4000	2219	137					
MT-18AA-500-H-1204-B2		5000	2283	141					
MT-18AA-570-H-1204-B2		5700	2294	142					
MT-18AA-270-S-1204-B2	91	2700	1739	107	550	36.0	19.8	1050	37.8
MT-18AA-300-S-1204-B2		3000	1831	113					
MT-18AA-400-S-1204-B2		4000	1886	116					
MT-18AA-500-S-1204-B2		5000	1941	120					
MT-18AA-270-H-1205-B2	82	2700	2388	121					
MT-18AA-300-H-1205-B2		3000	2514	127					
MT-18AA-400-H-1205-B2		4000	2589	131					
MT-18AA-500-H-1205-B2		5000	2665	135					
MT-18AA-570-H-1205-B2		5700	2677	135					
MT-18AA-270-S-1205-B2	91	2700	2030	103					
MT-18AA-300-S-1205-B2		3000	2137	108					
MT-18AA-400-S-1205-B2		4000	2201	111					
MT-18AA-500-S-1205-B2		5000	2265	114					

Ceramic Substrate MT-18AB Series

(Major COB line)



Feature

- Track light, PAR light 20/30/38
- 14mm LES
- Offer CRI 80 and CRI 90
- Standard 3-step with optional 2-step binning
- Voltage selection: 36v
- LM-80 certified

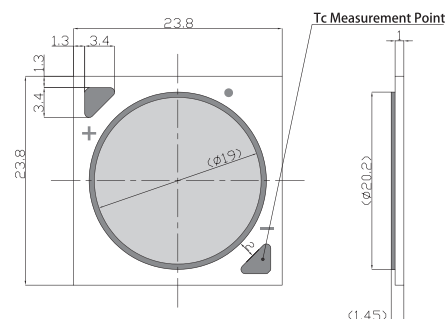
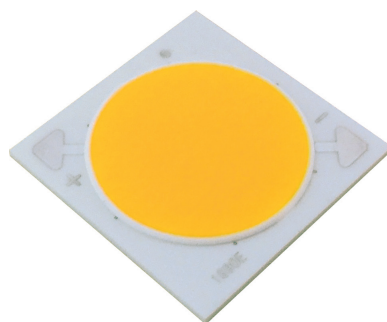
MT-18AB

型号 Part Number	显色性 Typ.Ra	色温 [K] CCT	光通量 [lm] @Typ.If	光效 [lm/w] @Typ.If	电流 [mA] Typ.If	电压 [V] Typ.Vf	功率 [W] Power	最大电流 [mA] Max.If	最大功率 [W] Max.Power
MT-18AB-270-H-1207-B2	82	2700	3478	121	800	36.0	28.8	1400	50.4
MT-18AB-300-H-1207-B2		3000	3661	127					
MT-18AB-400-H-1207-B2		4000	3771	131					
MT-18AB-500-H-1207-B2		5000	3881	135					
MT-18AB-570-H-1207-B2		5700	3899	135					
MT-18AB-270-S-1207-B2	91	2700	2956	103					
MT-18AB-300-S-1207-B2		3000	3112	108					
MT-18AB-400-S-1207-B2		4000	3205	111					
MT-18AB-500-S-1207-B2		5000	3299	115					

Ceramic Substrate MT-25AA Series

(Major COB line)

服务：聚焦客户关注的挑战和压力，提供有竞争力的 LED 解决方案和服务



Feature

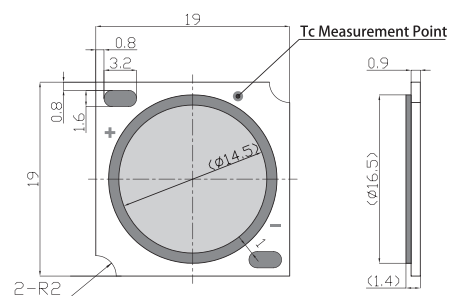
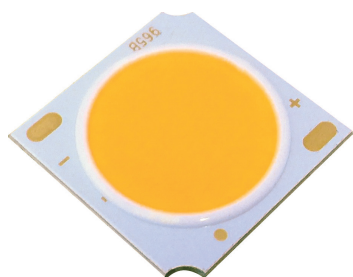
- Down light, high bay
- 19mm LES
- Offer CRI 80 and CRI 90
- Standard 3-step with optional 2-step binning
- Voltage selection: 36v

MT-25AA

型号 Part Number	显色性 Typ.Ra	色温 [K] CCT	光通量 [lm] @Typ.If	光效 [lm/w] @Typ.If	电流 [mA] Typ.If	电压 [V] Typ.Vf	功率 [W] Power	最大电流 [mA] Max.If	最大功率 [W] Max.Power
MT-25AA-270-H-1207-B	82	2700	3981	138	800	36.0	28.8	1600	57.6
MT-25AA-300-H-1207-B		3000	4191	146					
MT-25AA-400-H-1207-B		4000	4317	150					
MT-25AA-500-H-1207-B		5000	4442	154					
MT-25AA-570-H-1207-B		5700	4463	155					
MT-25AA-270-S-1207-B	91	2700	3384	118	1100	35.5	39.1	2100	74.6
MT-25AA-300-S-1207-B		3000	3562	124					
MT-25AA-400-S-1207-B		4000	3669	127					
MT-25AA-500-S-1207-B		5000	3776	131					
MT-25AA-270-H-1210-B	82	2700	5191	133					
MT-25AA-300-H-1210-B		3000	5464	140					
MT-25AA-400-H-1210-B		4000	5628	144					
MT-25AA-500-H-1210-B		5000	5792	148					
MT-25AA-570-H-1210-B		5700	5819	149					
MT-25AA-270-S-1210-B	91	2700	4412	113					
MT-25AA-300-S-1210-B		3000	4644	119					
MT-25AA-400-S-1210-B		4000	4784	123					
MT-25AA-500-S-1210-B		5000	4923	126					

Retail Lighting – V series

技术：技术创新是我们取得优势的条件

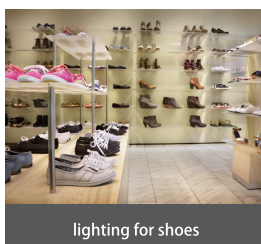


Feature

- BBBL color for retail and hospitality directional track light
- 2-step binning
- Voltage selection: 36v
- LM-80 certified

MC-19AA

型号 Part Number	显色性 Typ.Ra	色温 [K] CCT	光通量 [lm] @Typ.If	光效 [lm/w] @Typ.If	电流 [mA] Typ.If	电压 [V] Typ.Vf	功率 [W] Power	最大电流 [mA] Max.If	最大功率 [W] Max.Power
MC-19AA-V30-H-1208-B	80	V3000	4811	141	960	35.5	34.1	1840	65.3
MC-19AA-V30-E-1208-B	95	V3000	3893	114	960	35.5	34.1	1840	65.3



lighting for shoes



lighting for clothing

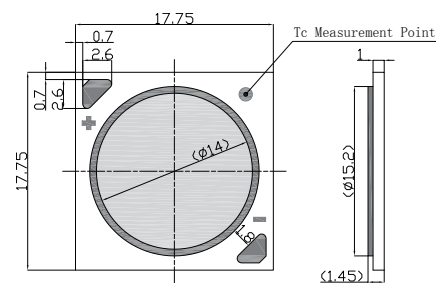
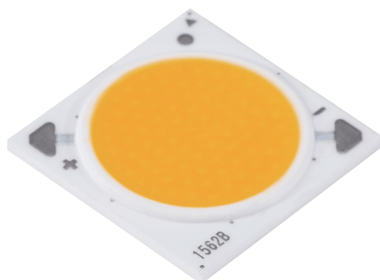


lighting for leather products

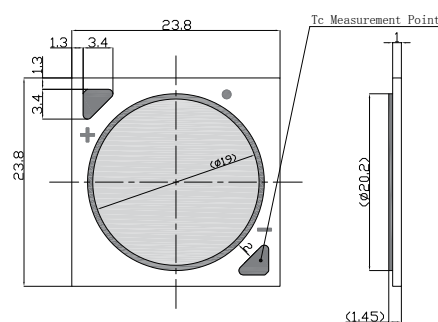
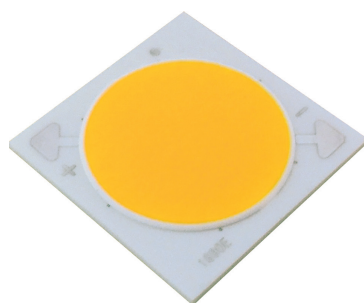
Supermarket Lighting Series

品质：不接受不良品、不制造不良品、不流出不良品

MT-18AB



MT-25AA



Feature

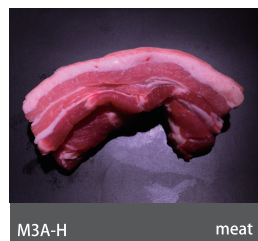
- Supermarket lighting for fruit, vegetable, meat, etc
- Different LES choices
- 3-step binning
- Voltage selection: 36v

MT-18AB

型号 Part Number	显色性 Typ.Ra	色温 [K] CCT	光通量 [lm] @Typ.If	光效 [lm/w] @Typ.If	电流 [mA] Typ.If	电压 [V] Typ.Vf	功率 [W] Power	最大电流 [mA] Max.If	最大功率 [W] Max.Power	应用 application
MT-18AB-V3B-S-1207-B	90	V3150	3098	121	720	35.5	25.6	1440	49.7	vegetable fruit
MT-18AB-M3A-H-1207-B	80	M3300	2408	94						meat

MT-25AA

型号 Part Number	显色性 Typ.Ra	色温 [K] CCT	光通量 [lm] @Typ.If	光效 [lm/w] @Typ.If	电流 [mA] Typ.If	电压 [V] Typ.Vf	功率 [W] Power	最大电流 [mA] Max.If	最大功率 [W] Max.Power	应用 application
MT-25AA-V3B-S-1210-B	90	V3150	5230	123	1200	35.5	42.6	2100	74.6	vegetable fruit
MT-25AA-M3A-H-1210-B	80	M3300	4031	95						meat

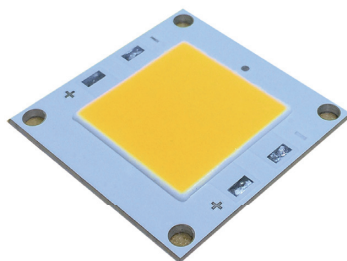


Flip-Chip MD Series

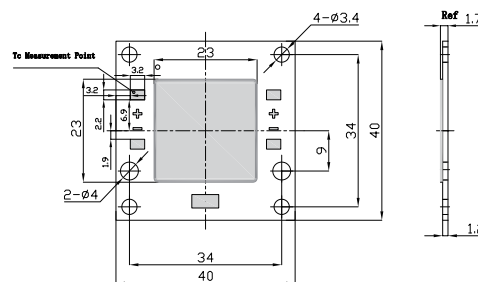
服务：聚焦客户关注的挑战和压力，提供有竞争力的 LED 解决方案和服务

Feature

- Flood light, high bay light and street light
- Offer CRI 60 and CRI 70
- 3-step binning
- Voltage selection: 50v&31v
- Flip-Chip die

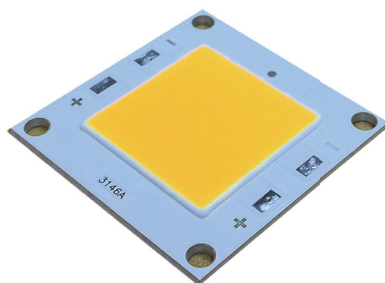


21.8mmx21.8mm

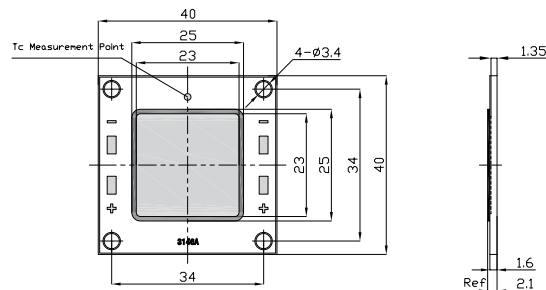


MD-40J1

型号 Part Number	显色性 Typ.Ra	色温 [K] CCT	光通量 [lm] @Typ.If	光效 [lm/w] @Typ.If	电流 [mA] Typ.If	电压 [V] Typ.Vf	功率 [W] Power	最大电流 [mA] Max.If	最大功率 [W] Max.Power
MD-40J1-500-N-1705-K1	70	4000	8349	169	1000	49.5	50	1600	80
MD-40J1-500-N-1709-K1			13344	163	1650	49.5	80	2050	100
MD-40J1-500-N-1712-K1			16148	159	2050	49.5	100	2350	120



23mmx23mm



MD-40J3

型号 Part Number	显色性 Typ.Ra	色温 [K] CCT	光通量 [lm] @Typ.If	光效 [lm/w] @Typ.If	电流 [mA] Typ.If	电压 [V] Typ.Vf	功率 [W] Power	最大电流 [mA] Max.If	最大功率 [W] Max.Power
MD-40J3-250-L-1125-K7*	60	2500	11445	154	2400	31	74.4	3000	100
MD-40J3-500-N-1125-K7	70	5000	12629	170	2400	31	74.4	3000	100

* 高光效高显指 LED 替换传统高压钠灯

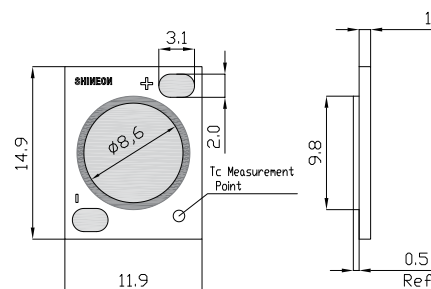
High-Voltage Sodium Light High Eff. High CRI LED Light to Replace a traditional High-Voltage Sodium Light

MF-12SA Warm Dimming

技术：技术创新是我们取得优势的条件

Feature

- Spot light, Down light
- 8.6mm LES
- CCT : from 1800K to 3000K
- Offer CRI 90
- 3-step binning
- Voltage :30v
- LM-80 certified



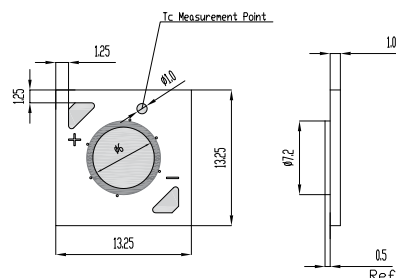
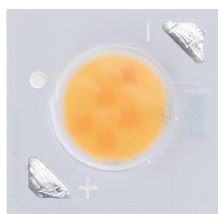
MF-12SA

型号 Part Number	显色性 Typ.Ra	色温 [K] CCT	光通量 [lm] @Typ.If	光效 [lm/w] @Typ.If	电流 [mA] Typ.If	电压 [V] Typ.Vf	功率 [W] Power	最大电流 [mA] Max.If	最大功率 [W] Max.Power
MF-12SA-1830-SS-A1C2-K7	92	1800	105	88	40	30.0	1.2	420	13.9
		3000	1261	109	350	33.0	11.6		

MF-13SA Warm Dimming

Feature

- Spot light, Down light
- 6mm LES
- CCT : from 1800K to 3000K
- Offer CRI 90
- 3-step binning
- Voltage :17.5v
- LM-80 certified



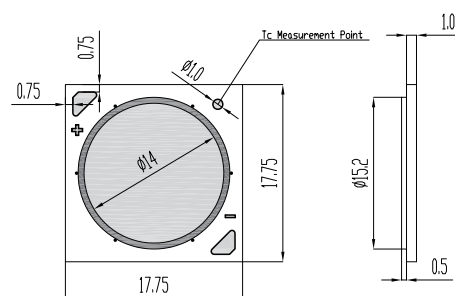
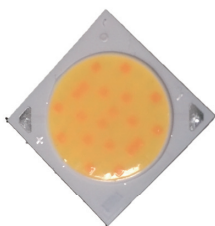
MF-13SA

型号 Part Number	显色性 Typ.Ra	色温 [K] CCT	光通量 [lm] @Typ.If	光效 [lm/w] @Typ.If	电流 [mA] Typ.If	电压 [V] Typ.Vf	功率 [W] Power	最大电流 [mA] Max.If	最大功率 [W] Max.Power
MF-13SA-1830-SS-5161-K7	92	1800	23	79	20	14.5	0.3	420	7.4
		3000	577	94	350	17.5	6.1		

MF-18SA Warm Dimming

Feature

- Spot light, Down light
- 14mm LES
- CCT : from 2000K to 3200K
- Offer CRI 90
- 3-step binning
- Voltage :30v

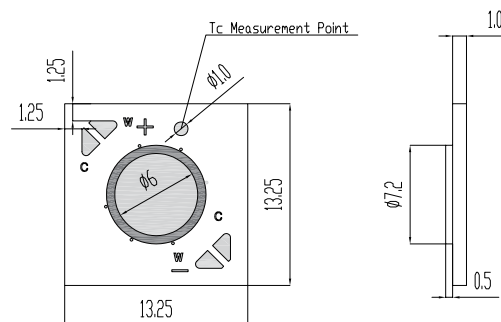
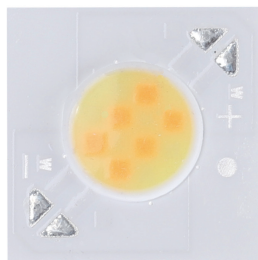


MF-18SA

型号 Part Number	显色性 Typ.Ra	色温 [K] CCT	光通量 [lm] @Typ.If	光效 [lm/w] @Typ.If	电流 [mA] Typ.If	电压 [V] Typ.Vf	功率 [W] Power	最大电流 [mA] Max.If	最大功率 [W] Max.Power
MF-18SA-2032-SS-A2C4-K7	92	2000	304	101	100	30.0	3.0	900	30.2
		3200	3020	120	750	33.5	25.1		

MF-13DA Color Tunable

品质：不接受不良品、不制造不良品、不流出不良品



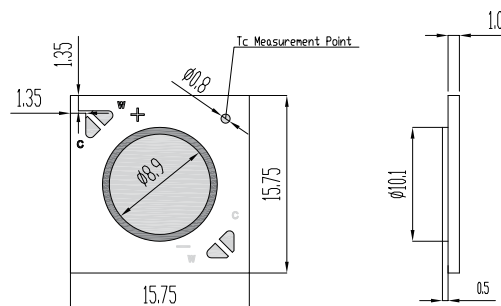
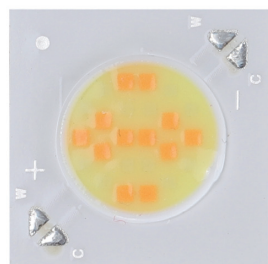
Feature

- Spot light, Down light
- 6mm LES
- CCT : from 2700K to 5700K
- Offer CRI 90
- 3-step binning
- Voltage :9v
- LM-80 certified

MF-13DA

型号 Part Number	显色性 Typ.Ra	色温 [K] CCT	光通量 [lm] @Typ.If	光效 [lm/w] @Typ.If	电流 [mA] Typ.If (C-C)	电流 [mA] Typ.If (W-W)	电压 [V] Typ.Vf	功率 [W] Power	最大电流 [mA] Max.If	最大功率 [W] Max.Power
MF-13DA-2757-SS-3232-K7	92	2700	588	93	100	600	9.0	6.3	800	7.2
		5700	725	115	670	30				

MF-15DA Color Tunable



Feature

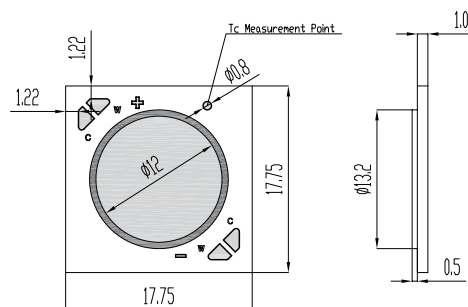
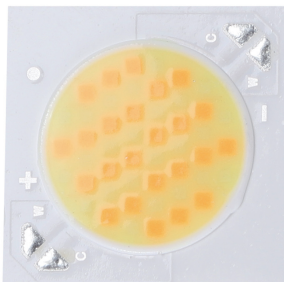
- Spot light, Down light
- 8.9mm LES
- CCT : from 2700K to 5700K
- Offer CRI 90
- 3-step binning
- Voltage :36v
- LM-80 certified

MF-15DA

型号 Part Number	显色性 Typ.Ra	色温 [K] CCT	光通量 [lm] @Typ.If	光效 [lm/w] @Typ.If	电流 [mA] Typ.If (C-C)	电流 [mA] Typ.If (W-W)	电压 [V] Typ.Vf	功率 [W] Power	最大电流 [mA] Max.If	最大功率 [W] Max.Power
MF-15DA-2757-SS-C1C1-K7	92	2700	1156	92	50	300	36.0	12.6	420	15.1
		5700	1418	113	335	15				

MF-18DB Color Tunable

服务：聚焦客户关注的挑战和压力，提供有竞争力的 LED 解决方案和服务



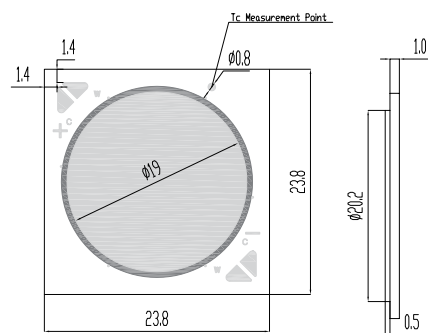
Feature

- Track light, Down light
- 12mm LES
- CCT : from 2700K to 5700K
- Offer CRI 90
- 3-step binning
- Voltage :36v
- LM-80 certified

MF-18DB

型号 Part Number	显色性 Typ.Ra	色温 [K] CCT	光通量 [lm] @Typ.If	光效 [lm/w] @Typ.If	电流 [mA] Typ.If (C-C)	电流 [mA] Typ.If (W-W)	电压 [V] Typ.Vf	功率 [W] Power	最大电流 [mA] Max.If	最大功率 [W] Max.Power
MF-18DB-2757-SS-C2C2-K7	92	2700	2248	89	100	600	36.0	25.2	840	30.2
		5700	2805	111	670	30				

MF-25DA Color Tunable



Feature

- High bay, Down light
- 19mm LES
- CCT : from 2700K to 5700K
- Offer CRI 90
- 3-step binning
- Voltage :36v
- LM-80 certified

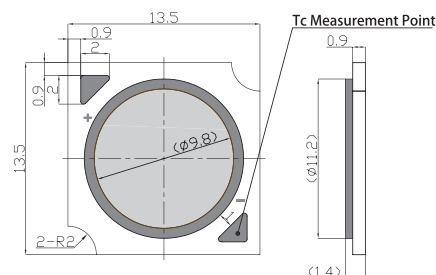
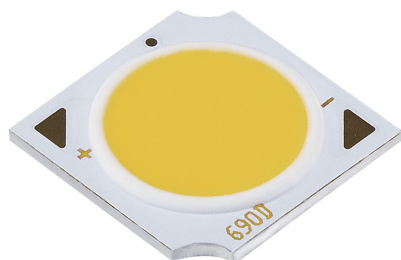
MF-25DA

型号 Part Number	显色性 Typ.Ra	色温 [K] CCT	光通量 [lm] @Typ.If	光效 [lm/w] @Typ.If	电流 [mA] Typ.If (C-C)	电流 [mA] Typ.If (W-W)	电压 [V] Typ.Vf	功率 [W] Power	最大电流 [mA] Max.If	最大功率 [W] Max.Power
MF-25DA-2757-SS-C4C4-K7	92	2700	4265	85	200	1200	36.0	50.4	1680	60.5
		5700	5326	106	1340	60				

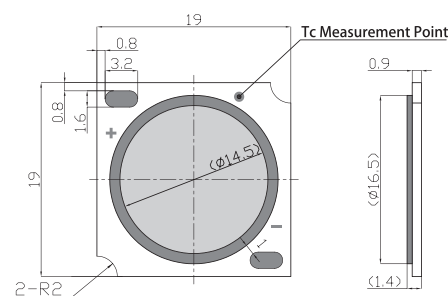
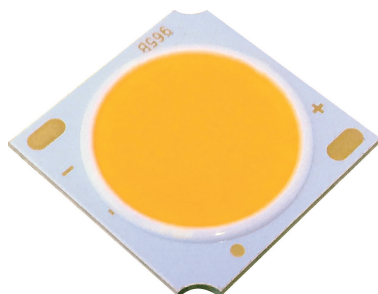
Full Spectrum Kaleidolite™ Series

技术：技术创新是我们取得优势的条件

MC-13AA



MC-19AA



Feature

- High CRI/R9
- High color fidelity Rf
- Proper color gamut Rg
- Different LES choices
- 3-step binning
- Voltage selection: 9V and 36V

MC-13AA

型号 Part Number	显色性 Typ.Ra	色温 [K] CCT	光通量 [lm] @Typ.If	光效 [lm/w] @Typ.If	电流 [mA] Typ.If	电压 [V] Typ.Vf	功率 [W] Power	最大电流 [mA] Max.If	最大功率 [W] Max.Power
MC-13AA-270-F-0308-B	97	2700	792	126	720	8.7	6.3	1840	16.4
			1029	120	960	8.9	8.5		
MC-13AA-300-F-0308-B		3000	834	133	720	8.7	6.3		
			1083	127	960	8.9	8.4		
MC-13AA-400-F-0308-B		4000	859	137	720	8.7	6.3		
			1115	131	960	8.9	8.5		
MC-13AA-500-F-0308-B		5000	884	141	720	8.7	6.3		
			1148	134	960	8.9	8.5		
MC-13AA-570-F-0308-B		5700	888	142	720	8.7	6.3		
			1153	135	960	8.9	8.5		

MC-19AA

型号 Part Number	显色性 Typ.Ra	色温 [K] CCT	光通量 [lm] @Typ.If	光效 [lm/w] @Typ.If	电流 [mA] Typ.If	电压 [V] Typ.Vf	功率 [W] Power	最大电流 [mA] Max.If	最大功率 [W] Max.Power
MC-19AA-270-F-1208-C	97	2700	1901	118	480	33.5	16.1	960	32.6
			2837	116	720	34.0	24.5		
MC-19AA-300-F-1208-C		3000	2001	124	480	33.5	16.1		
			2986	122	720	34.0	24.5		
MC-19AA-400-F-1208-C		4000	2061	128	480	33.5	16.1		
			3076	126	720	34.0	24.5		
MC-19AA-500-F-1208-C		5000	2121	132	480	33.5	16.1		
			3165	129	720	34.0	24.5		
MC-19AA-570-F-1208-C		5700	2131	133	480	33.5	16.1		
			3180	130	720	34.0	24.5		
MC-19AA-270-F-1208-B	97	2700	2761	111	720	34.5	24.8	1840	64.4
			3586	107	960	35.0	33.6		
MC-19AA-300-F-1208-B		3000	2907	117	720	34.5	24.8		
			3775	112	960	35.0	33.6		
MC-19AA-400-F-1208-B		4000	2994	121	720	34.5	24.8		
			3888	116	960	35.0	33.6		
MC-19AA-500-F-1208-B		5000	3081	124	720	34.5	24.8		
			4002	119	960	35.0	33.6		
MC-19AA-570-F-1208-B		5700	3096	125	720	34.5	24.8		
			4020	120	960	35.0	33.6		